

A modern, white, rectangular LED street light fixture is shown, mounted on a white pole. The fixture features a series of yellow LED chips and a small, integrated camera lens. The background is dark with a large, curved red line. The text "LED Street Light" and "PRODUCT CATALOGUE" is displayed in white.

LED Street Light

PRODUCT CATALOGUE



CONTENT

Street lamp-----P01-P02

Integrated solar street light-----P03-P14

Solar street light-----P15-P22

High pole lights-----P23-P24

Municipal street light-----P25-P41

UFO High bay light-----P42-P43

Floodlight-----P44-P48



Road Lighting Application



Tunnel Lighting Application



Smart Street Lighting Application



Bridge Lighting Application



Garden Lighting Application



Stadium Lighting Application



Factory Lighting Applications



Square Lighting Application



We believe in light



AIO-01 SERIES

SOLAR STREET LIGHT

30W-100W



30W

40W

60W

100W

Features

Monocrystalline silicon solar panel, waterproof grade IP65, light working time: 12 hours, 5-7 days in rainy days, solar energy integrated system.

Function

- 1、Infrared radar sensor
- 2、Surveillance camera



- A variety of options
- Support customization

Technical parameter

Item No.	Power	Luminous Efficiency	Product Size(mm)	Weight(kg)
AIO 01	30W	150-160LM/W	368*860*50	12kg
AIO 01	40W	150-160LM/W	368*1190*50	14kg
AIO 01	60W	150-160LM/W	368*1350*50	16kg
AIO 01	100W	150-160LM/W	368*1510*50	20kg





ART-AIO-02 SERIES
SOLAR STREET LIGHT
30W-100W



30W

40W

60W

100W

Features

Monocrystalline silicon solar panel, waterproof grade IP65, light working time: 12 hours, 5-7 days in rainy days, solar energy integrated system.

Function

- 1、Infrared radar sensor
- 2、Surveillance camera



- A variety of options
- Support customization

Technical parameter

Item No.	Power	Luminous Efficiency	Product Size(mm)	Weight(kg)
AIO 02	30W	150-160LM/W	368*860*50	12kg
AIO 02	40W	150-160LM/W	368*1190*50	14kg
AIO 02	60W	150-160LM/W	368*1350*50	16kg
AIO 02	100W	150-160LM/W	368*1510*50	20kg

IP65

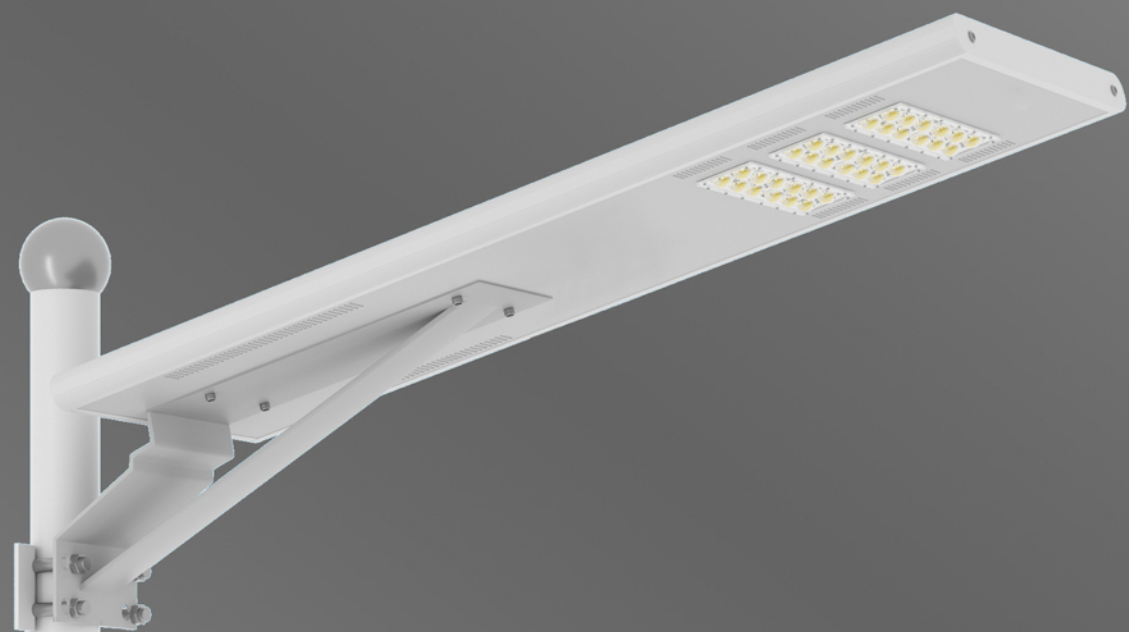
CRI 70

30V/
85-265V

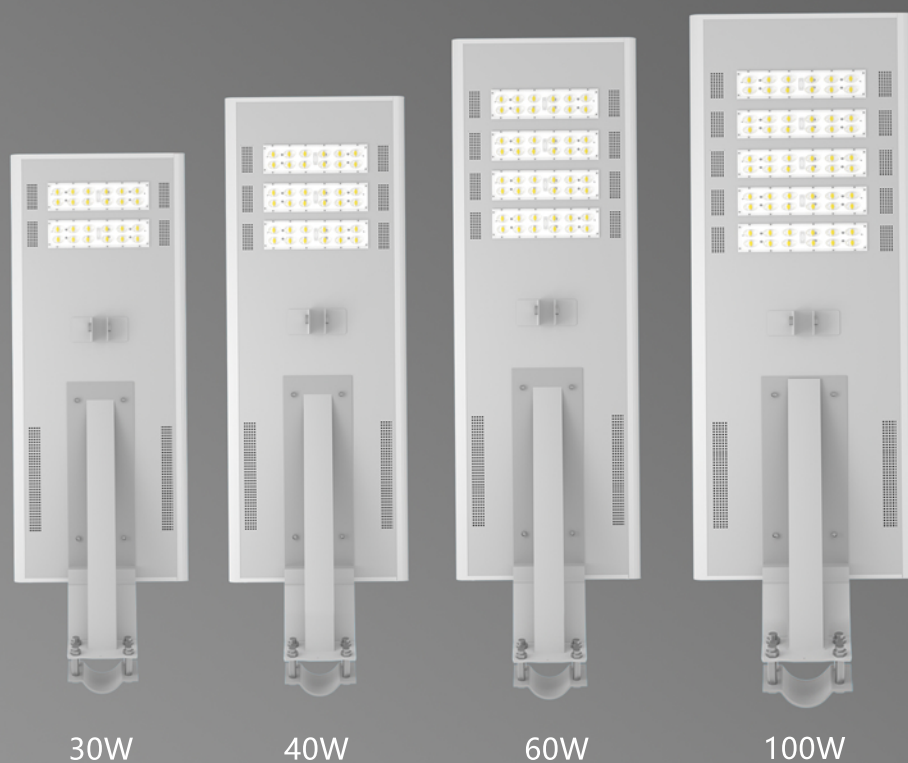
PF > 0.95

CCT
3000K-6500K

50000H



AIO-03 SERIES SOLAR STREET LIGHT 30W-100W



30W

40W

60W

100W

Features

Monocrystalline silicon solar panel, waterproof grade IP65, light working time: 12 hours, 5-7 days in rainy days, solar energy integrated system.

Function

- 1、Infrared radar sensor
- 2、Surveillance camera



- A variety of options
- Support customization

Technical parameter

Item No.	Power	Luminous Efficiency	Product Size(mm)	Weight(kg)
AIO 03	30W	150-160LM/W	368*860*50	12kg
AIO 03	40W	150-160LM/W	368*1190*50	14kg
AIO 03	60W	150-160LM/W	368*1350*50	16kg
AIO 03	100W	150-160LM/W	368*1510*50	20kg





AIO-04 SERIES SOLAR STREET LIGHT 30W-100W



Features

Monocrystalline silicon solar panel, waterproof grade IP65, light working time: 12 hours, 5-7 days in rainy days, solar energy integrated system.

Function

- 1、Infrared radar sensor
- 2、Surveillance camera

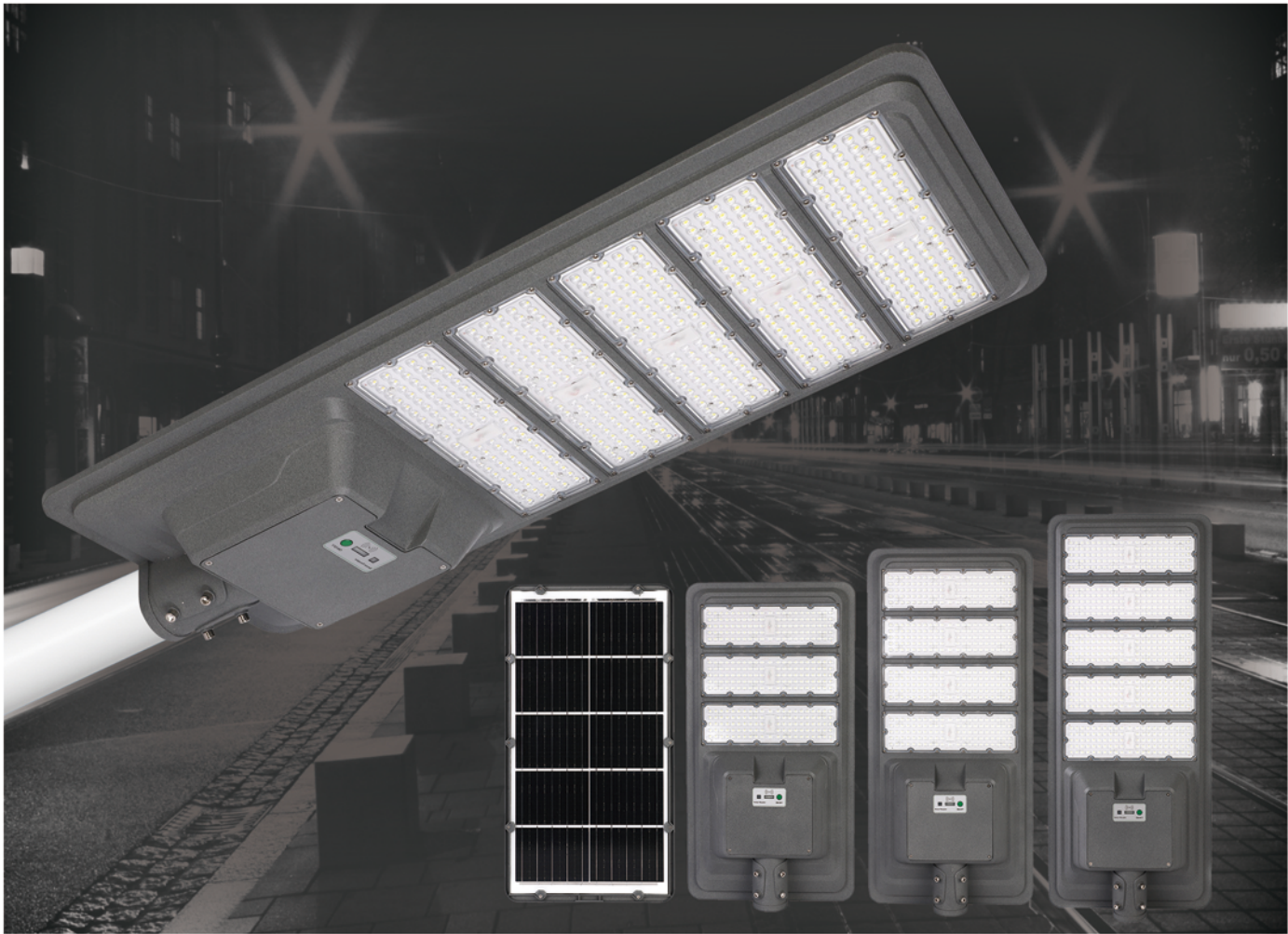


- A variety of options
- Support customization

Technical parameter

Item No.	Power	Luminous Efficiency	Product Size(mm)	Weight(kg)
AIO 04	30W	150-160LM/W	368*860*50	12kg
AIO 04	40W	150-160LM/W	368*1190*50	14kg
AIO 04	60W	150-160LM/W	368*1350*50	16kg
AIO 04	100W	150-160LM/W	368*1510*50	20kg





Technical parameter

Item No.	Power	Luminous Efficiency	Product Size(mm)	Weight(kg)
LHY01	300W	130-140LM/W	703*365*87	6.9kg
LHY01	400W	130-140LM/W	810*365*87	7.9kg
LHY01	500W	130-140LM/W	916*365*87	8.5kg

Features

LED independent controller, light control + time and space, waterproof grade IP65
Lighting working time: 12 hours,Rainy days 5-7 days.Solar integrated system.

IP65

CRI 70

30V/
85-265V

PF > 0.95

CCT
3000K-6500K

50000H



Technical parameter

Item No.	Power	Luminous Efficiency	Product Size(mm)	Weight(kg)
YLED01	180W	150-160LM/W	887*400*280	9.6kg
YLED01	240W	150-160LM/W	1160*400*280	12.5kg
YLED01	300W	150-160LM/W	1435*400*280	15.5kg

Features

Brand new A battery LED independent controller light control + time and space + in-
frared human body induction Waterproof grade IP65 Lighting working time: 12 hours,
Rainy days 5-7 days Solar integrated system.

IP65

CRI 70

30V/
85-265V

PF > 0.95

CCT
3000K-6500K

50000H



Technical parameter

Item No.	Power	Luminous Efficiency	Product Size(mm)	Structure Description
YTH01	60W	150-160LM/W	520*240*65	Die-casting aluminum
YTH01	120W	150-160LM/W	630*270*75	Die-casting aluminum
YTH01	180W	150-160LM/W	750*290*75	Die-casting aluminum

Features

New A battery LED independent controller automatic light control plus time and space + radar sensor with remote control, waterproof grade IP65. Lighting working time: 12 hours, 5-7 days in rainy days, solar energy integrated system.

IP65

CRI 70

30V/
85-265V

PF > 0.95

CCT
3000K-6500K

50000H



Technical parameter

Item No.	Power	Luminous Efficiency	Product Size(mm)	Voltage
DM01	50W	130-140LM/W	500*220*130	30V
DM01	100W	130-140LM/W	700*220*130	30V
DM01	150W	130-140LM/W	900*220*130	30V
DM01	200W	130-140LM/W	1000*220*130	30V

Features

New A battery LED independent controller light sensor + remote control switch + human body sensor, waterproof grade IP65. Lighting working time: 10 hours, 2.5 days in rainy days, 2 years warranty, solar energy integrated system.

IP65

CRI 70

30V/
85-265V

PF > 0.95

CCT
3000K-6500K

50000H

DB01 SERIES

SOLAR STREET LIGHT

90W



Conch Arm

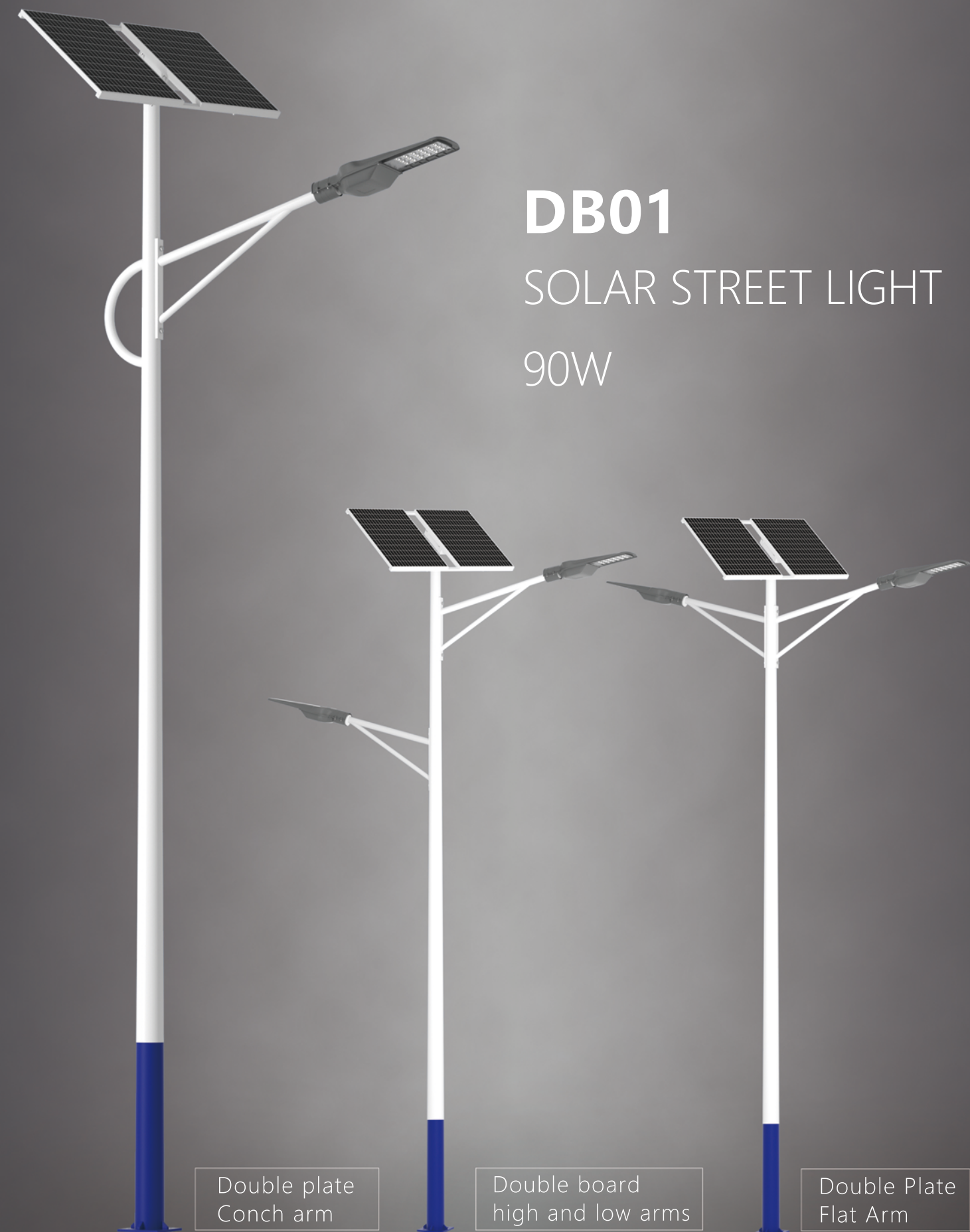
Features

Item: DB01	Light pole height : 6-12m
Power: 90W	Upper diameter : 60mm
Input voltage: 12V	Lower diameter : 130mm
Lumens: 120lm/w	Beam angle: 140*70°
LED chip: Philips	IP Rating: IP65
CCT: 3000K/4000K/6000K	Flange: 250*250*10mm

Solar street lights do not require cables, AC power supply, or electricity charges. Adopt DC power supply and control; It has the advantages of good stability, long life, high luminous rate, easy installation and maintenance, high safety performance, energy saving and environmental protection, economic and practical.



IP65	CRI 70	30V/ 85-265V	PF > 0.95	CCT 3000K-6500K	50000H
------	--------	-----------------	-----------	--------------------	--------



Features

Item: DB01

Power: 90W

Input voltage: 12V

Lumens: 120lm/w

LED chip: Philips

CCT: 3000K/4000K/6000K

Light pole height : 6-12m

Upper diameter : 60mm

Lower diameter : 130mm

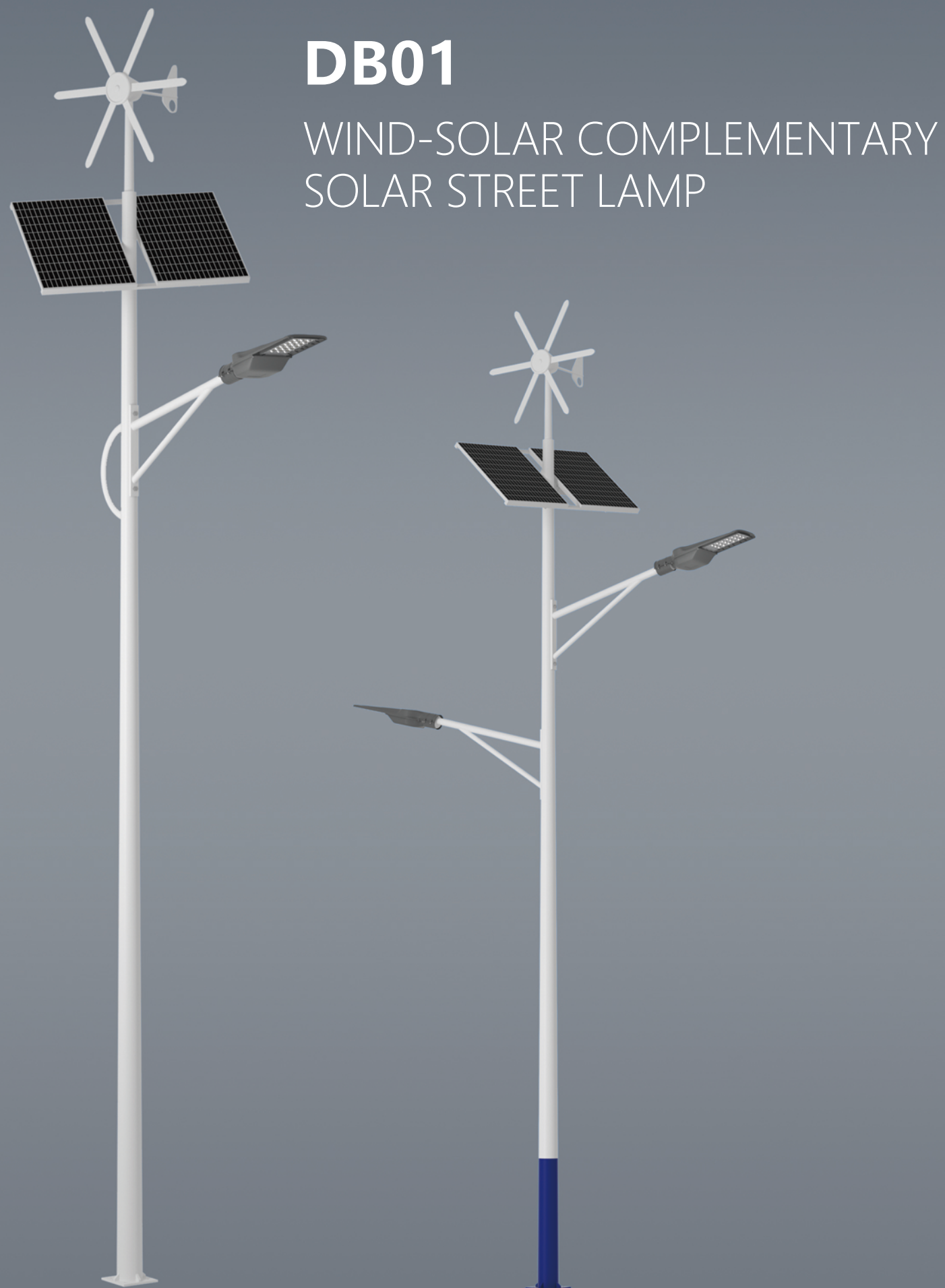
Beam angle: 140*70°

IP Rating: IP65

Flange: 250*250*10mm

Solar street lights do not require cables, AC power supply, or electricity charges. Adopt DC power supply and control; It has the advantages of good stability, long life, high luminous rate, easy installation and maintenance, high safety performance, energy saving and environmental protection, economic and practical.





Features

Item: DB01

Power: 90W

Input voltage: 12V

Lumens: 120lm/w

LED chip: Philips

CCT: 3000K/4000K/6000K

Light pole height : 6-12m

Upper diameter : 60mm

Lower diameter : 130mm

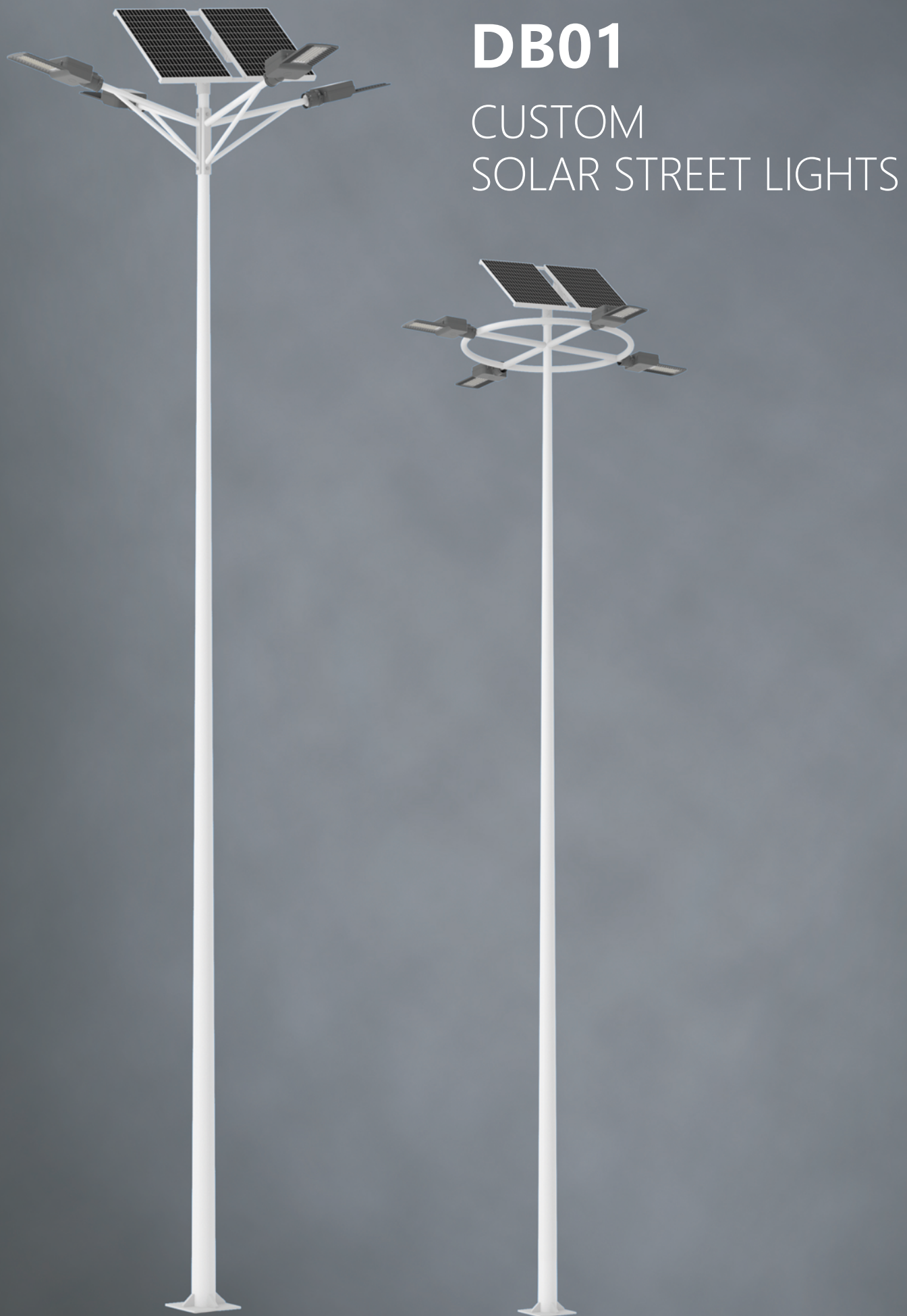
Beam angle: 140*70°

IP Rating: IP65

Flange: 250*250*10mm

Wind-sun complementary solar street lamp: 1, wind-sun integration, strong complementarity, high stability 2, does not produce any pollution to the environment, absolute green environmental protection 3, environmental protection 4, high safety 5, simple installation.





Features

Item: DB01

Power: 90W

Input voltage: 12V

Lumens: 120lm/w

LED chip: Philips

CCT: 3000K/4000K/6000K

Light pole height : 6-12m

Upper diameter : 60mm

Lower diameter : 130mm

Beam angle: 140*70°

IP Rating: IP65

Flange: 250*250*10mm

Solar street lights do not require cables, AC power supply, or electricity charges. Adopt DC power supply and control; It has the advantages of good stability, long life, high luminous rate, easy installation and maintenance, high safety performance, energy saving and environmental protection, economic and practical.



IP65

CRI 70

30V/
85-265V

PF > 0.95

CCT
3000K-6500K

50000H

HIGH POLE LIGHTS

LED FLOOD LIGHT
400W-1200W



Light pole height : 8-30m

The stadium light has beautiful appearance, large lighting area, good effect, concentrated light source, uniform illumination, small glare, easy control and maintenance.



Technical parameter

Item No.	Power	Luminous Efficiency	Product Size(mm)	Weight(kg)
QC01	200W	120LM/W	120*560*125	3.4kg
QC01	400W	120LM/W	250*560*125	5.76kg
QC01	600W	120LM/W	380*560*125	8.12kg
QC01	800W	120LM/W	510*560*125	9.76kg
QC01	1000W	120LM/W	640*560*125	11.98kg
QC01	1200W	120LM/W	770*560*125	14.34kg

IP65

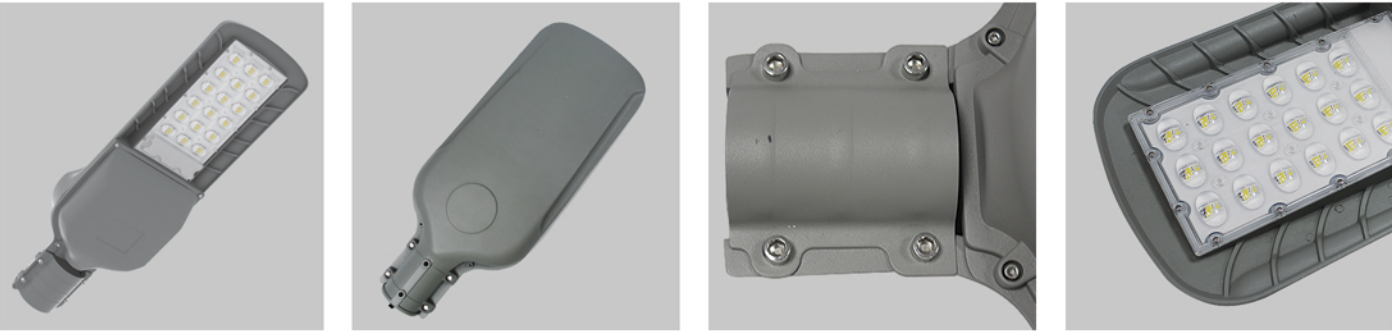
CRI 70

30V/
85-265V

PF > 0.95

CCT
3000K-6500K

50000H



Technical parameter

Item No.	Power	Luminous Efficiency	Product Size(mm)	Weight(kg)
DB01	90W	120LM/W	555*218*60	2kg

IP65

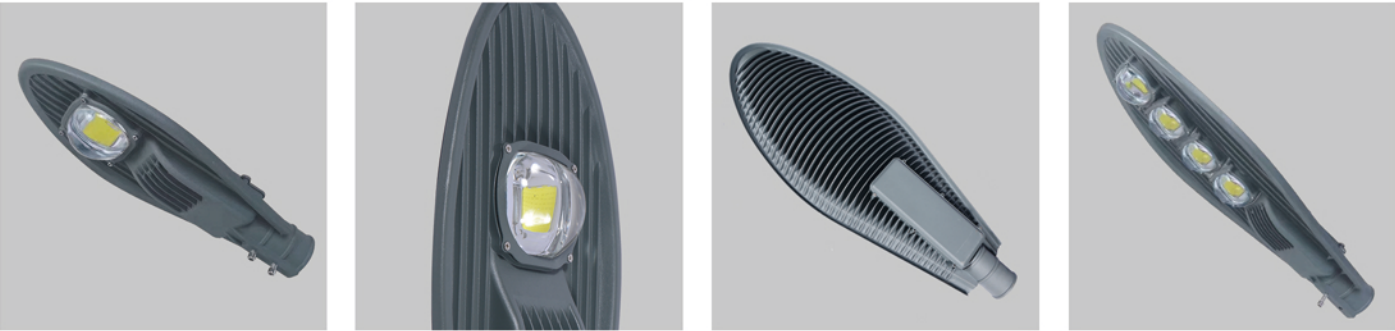
CRI 70

30V/85-265V

PF > 0.95

CCT 3000K-6500K

50000H



Technical parameter

Item No.	Power	Luminous Efficiency	Product Size(mm)	Weight(kg)
BJ01	50W	120LM/W	505*215*75	1.5kg
BJ01	100W	120LM/W	725*285*82	3.1kg
BJ01	150W	120LM/W	860*330*80	4.5kg
BJ01	200W	120LM/W	950*355*85	5.3kg

IP65

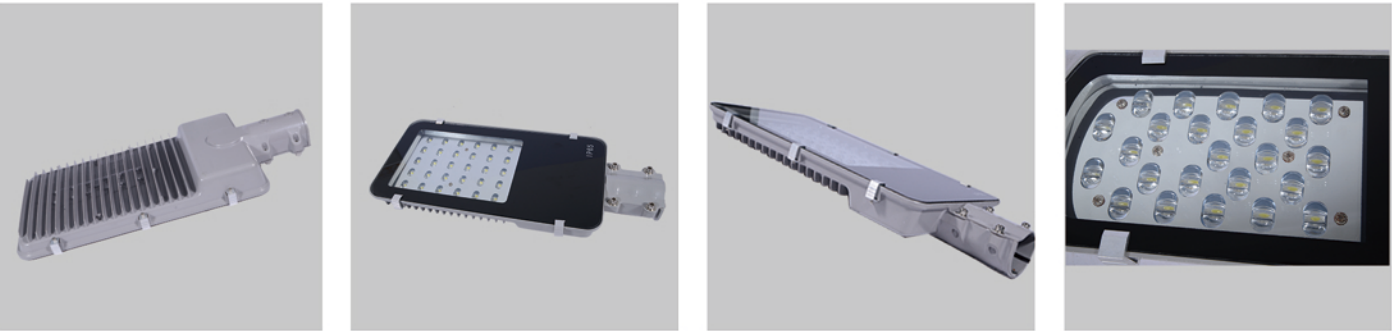
CRI 70

30V/85-265V

PF > 0.95

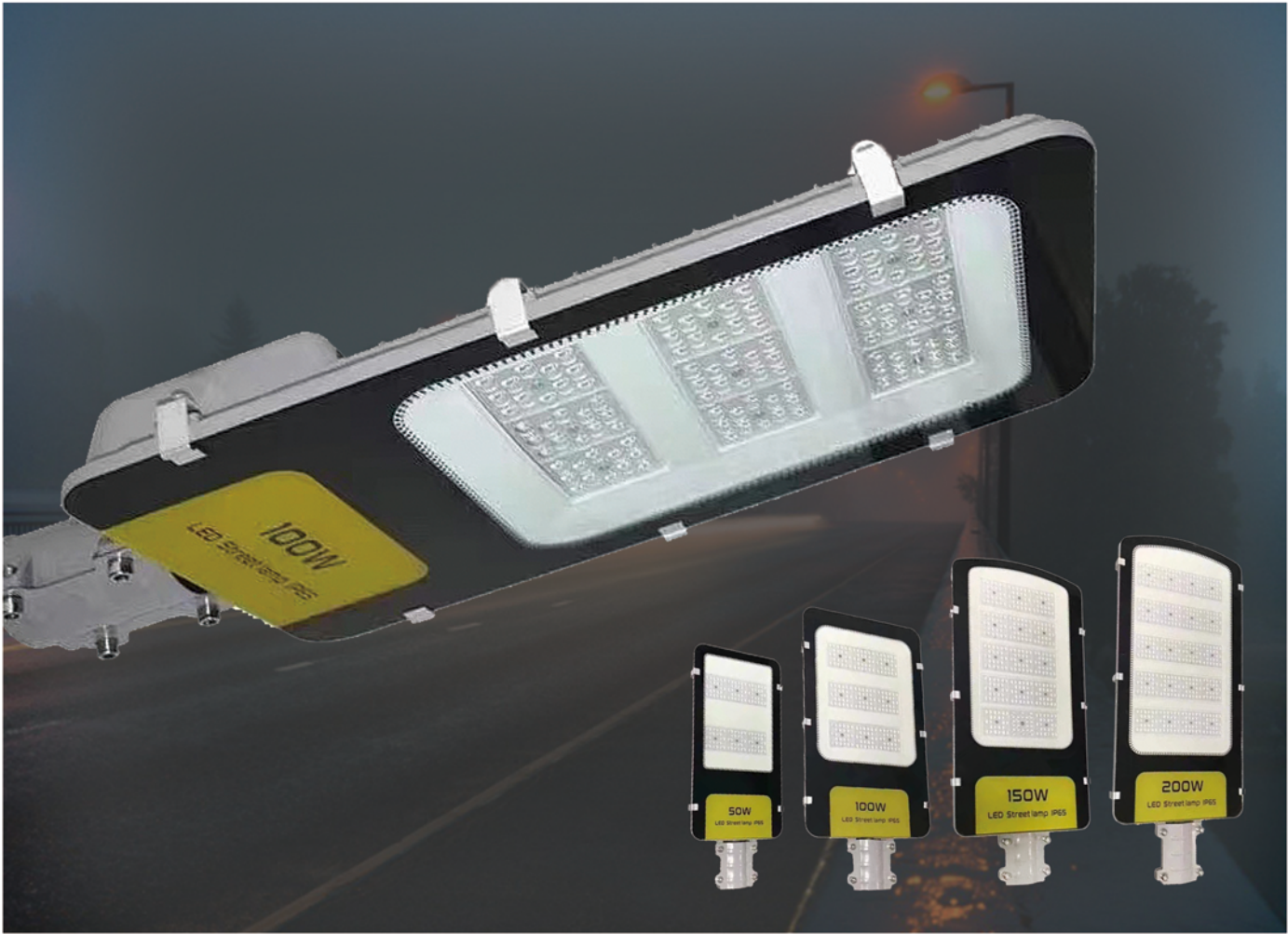
CCT 3000K-6500K

50000H



Technical parameter

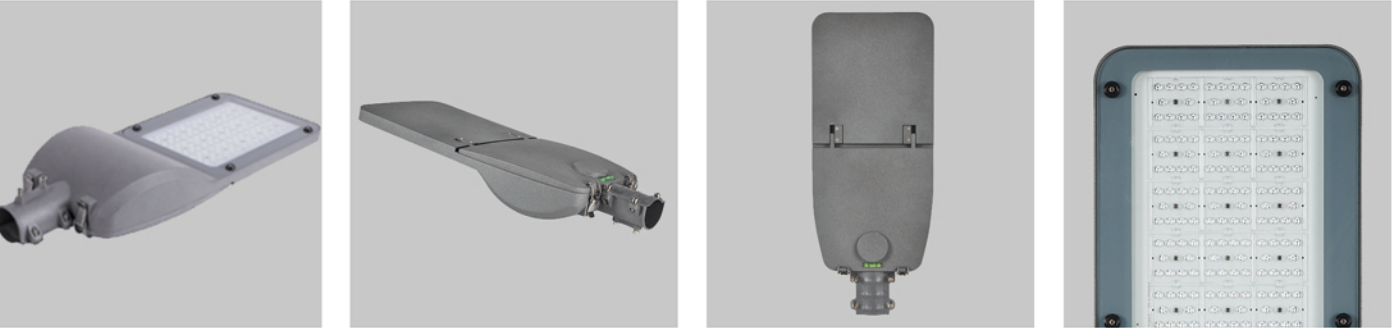
Item No.	Power	Luminous Efficiency	Product Size(mm)	Weight(kg)
XJD01	50W	120LM/W	495*210*50	1.4kg
XJD01	80W	120LM/W	540*250*46	2.1kg
XJD01	100W	120LM/W	600*260*60	2.5kg
XJD01	150W	120LM/W	700*285*68	3.8kg
XJD01	200W	120LM/W	700*285*68	3.89kg



Technical parameter

Item No.	Power	Luminous Efficiency	Product Size(mm)	Weight(kg)
JD01	50W	120LM/W	500*210*90	1.5kg
JD01	100W	120LM/W	540*250*46	2.0kg
JD01	150W	120LM/W	600*260*60	2.4kg
JD01	200W	120LM/W	700*285*68	3.8kg





Technical parameter

Item No.	Power	Luminous Efficiency	Product Size(mm)	Weight(kg)
ART01	30W	120LM/W	325*150*65	0.81kg
ART01	50W	120LM/W	375*150*65	1.1kg
ART01	100W	120LM/W	525*180*75	1.95kg
ART01	150W	120LM/W	650*260*95	3.7kg
ART01	200W	120LM/W	700*260*95	4.3kg

IP65

CRI 70

30V/
85-265V

PF > 0.95

CCT
3000K-6500K

50000H



Technical parameter

Item No.	Power	Luminous Efficiency	Product Size(mm)	Weight(kg)
JD01	100W	120LM/W	525*300*90	3kg
JD01	150W	120LM/W	610*300*90	3.6kg
JD01	200W	120LM/W	670*300*90	4.2kg
JD01	250W	120LM/W	780*300*90	4.8kg
JD01	300W	120LM/W	870*300*90	5.2kg

IP65

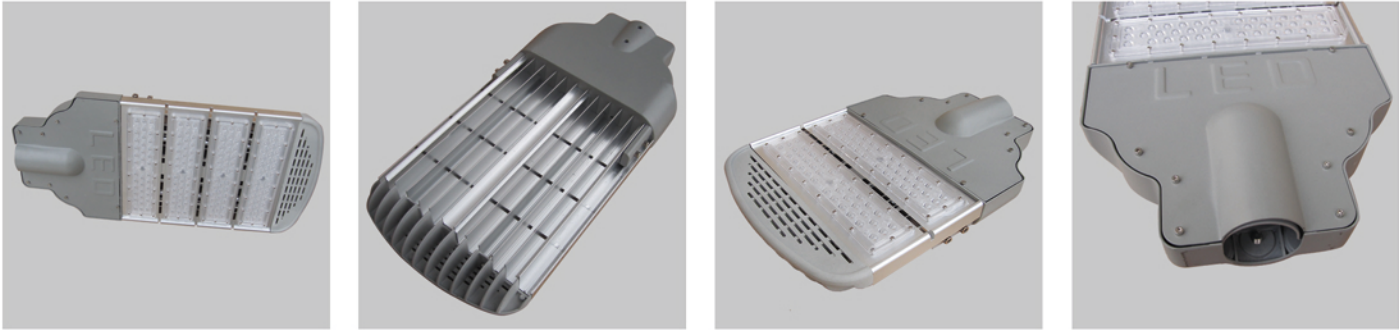
CRI 70

30V/
85-265V

PF > 0.95

CCT
3000K-6500K

50000H



Technical parameter

Item No.	Power	Luminous Efficiency	Product Size(mm)	Weight(kg)
MZ01	100W	120LM/W	450*310*80	1.9kg
MZ01	150W	120LM/W	530*310*80	2.25kg
MZ01	200W	120LM/W	610*310*80	2.6kg
MZ01	250W	120LM/W	695*310*80	2.9kg



Technical parameter

Item No.	Power	Luminous Efficiency	Product Size(mm)	Weight(kg)
MZ02	100W	120LM/W	450*310*80	1.9kg
MZ02	150W	120LM/W	530*310*80	2.25kg
MZ02	200W	120LM/W	610*310*80	2.6kg
MZ02	250W	120LM/W	695*310*80	2.9kg





Technical parameter

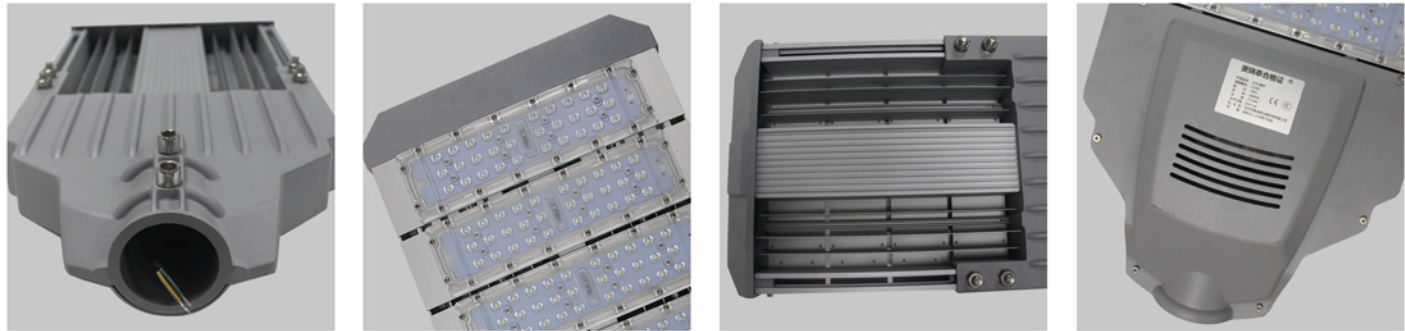
Item No.	Power	Luminous Efficiency	Product Size(mm)	Weight(kg)
MZ03	100W	120LM/W	455*340*97	3.86kg
MZ03	150W	120LM/W	536*340*97	4.76kg
MZ03	200W	120LM/W	617*340*97	5.61kg
MZ03	250W	120LM/W	698*340*97	6.7kg
ART01	300W	120LM/W	779*340*97	7.79kg



Technical parameter

Item No.	Power	Luminous Efficiency	Product Size(mm)	Weight(kg)
MZ04	100W	120LM/W	550*330*100	2.2kg
MZ04	150W	120LM/W	625*330*100	2.5kg
MZ04	200W	120LM/W	710*330*100	2.9kg





Technical parameter

Item No.	Power	Luminous Efficiency	Product Size(mm)	Structure Description
LED01	110W	120LM/W	640*310*115	Die-casting aluminum

IP65

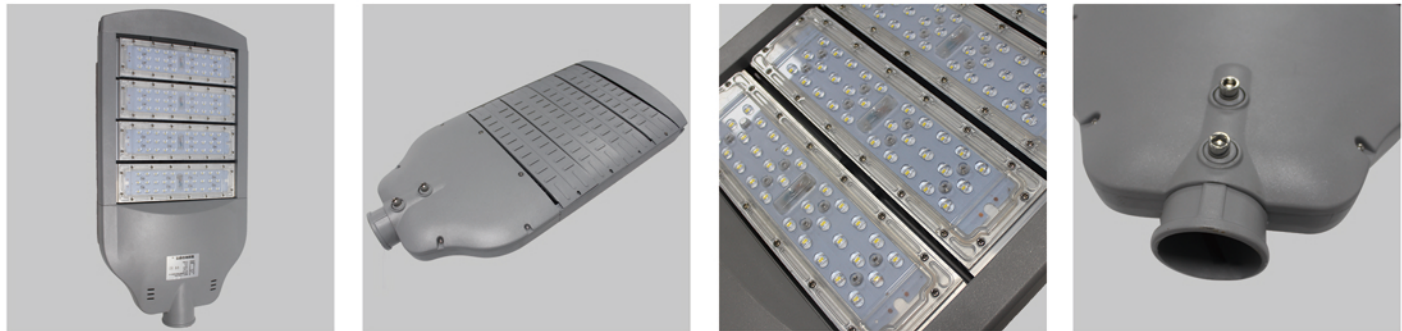
CRI 70

30V/85-265V

PF > 0.95

CCT 3000K-6500K

50000H



Technical parameter

Item No.	Power	Luminous Efficiency	Product Size(mm)	Structure Description
LED02	110W	120LM/W	652*320*75	Die-casting aluminum

IP65

CRI 70

30V/85-265V

PF > 0.95

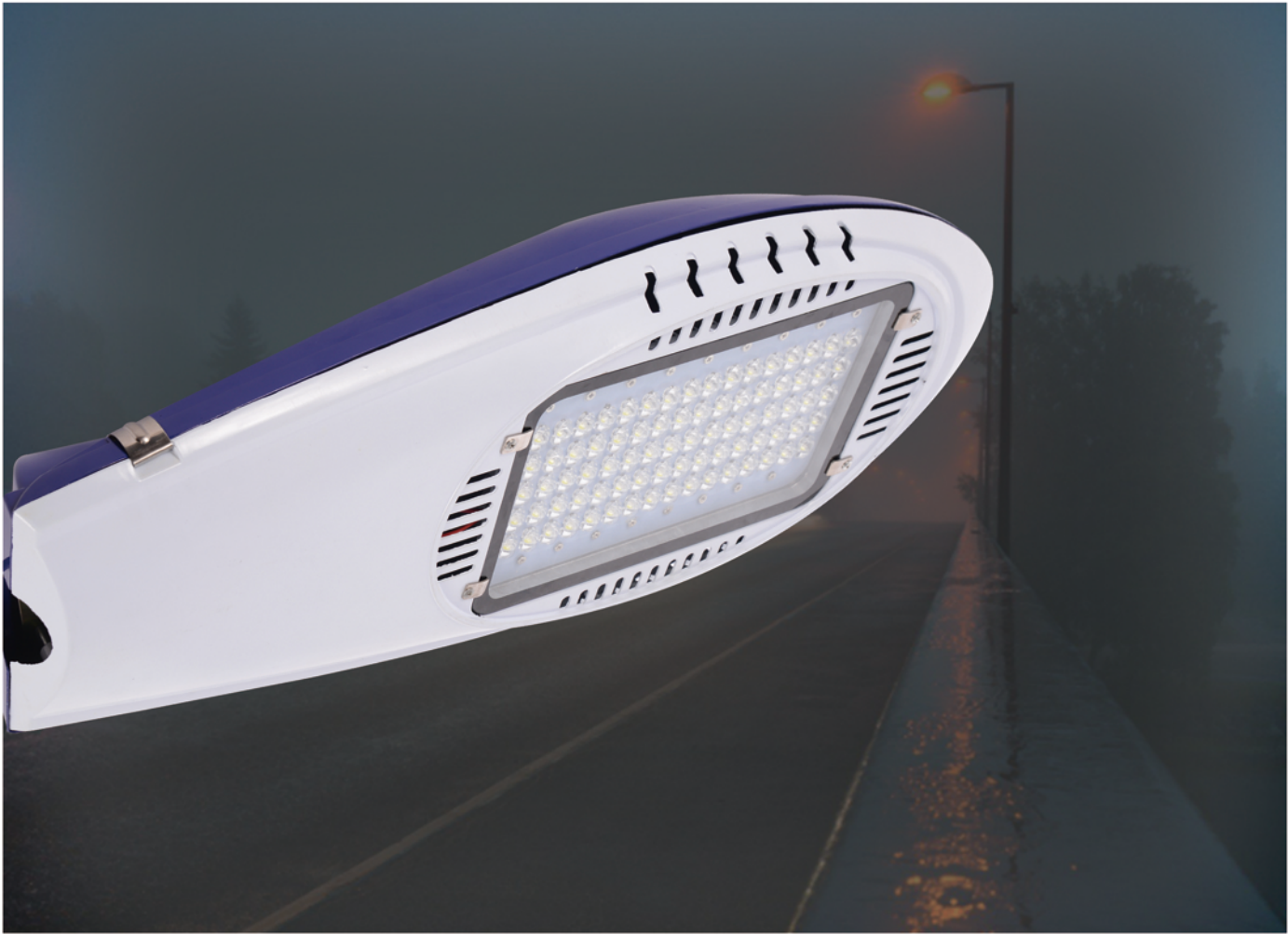
CCT 3000K-6500K

50000H



Technical parameter

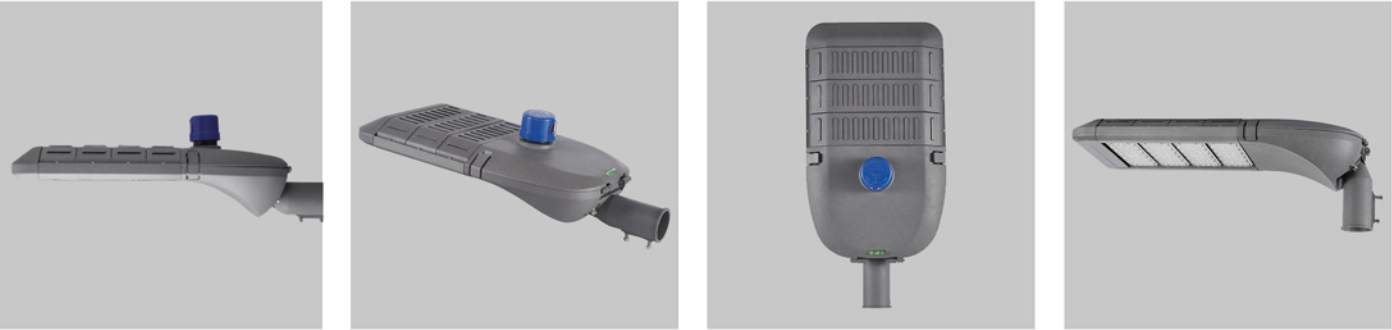
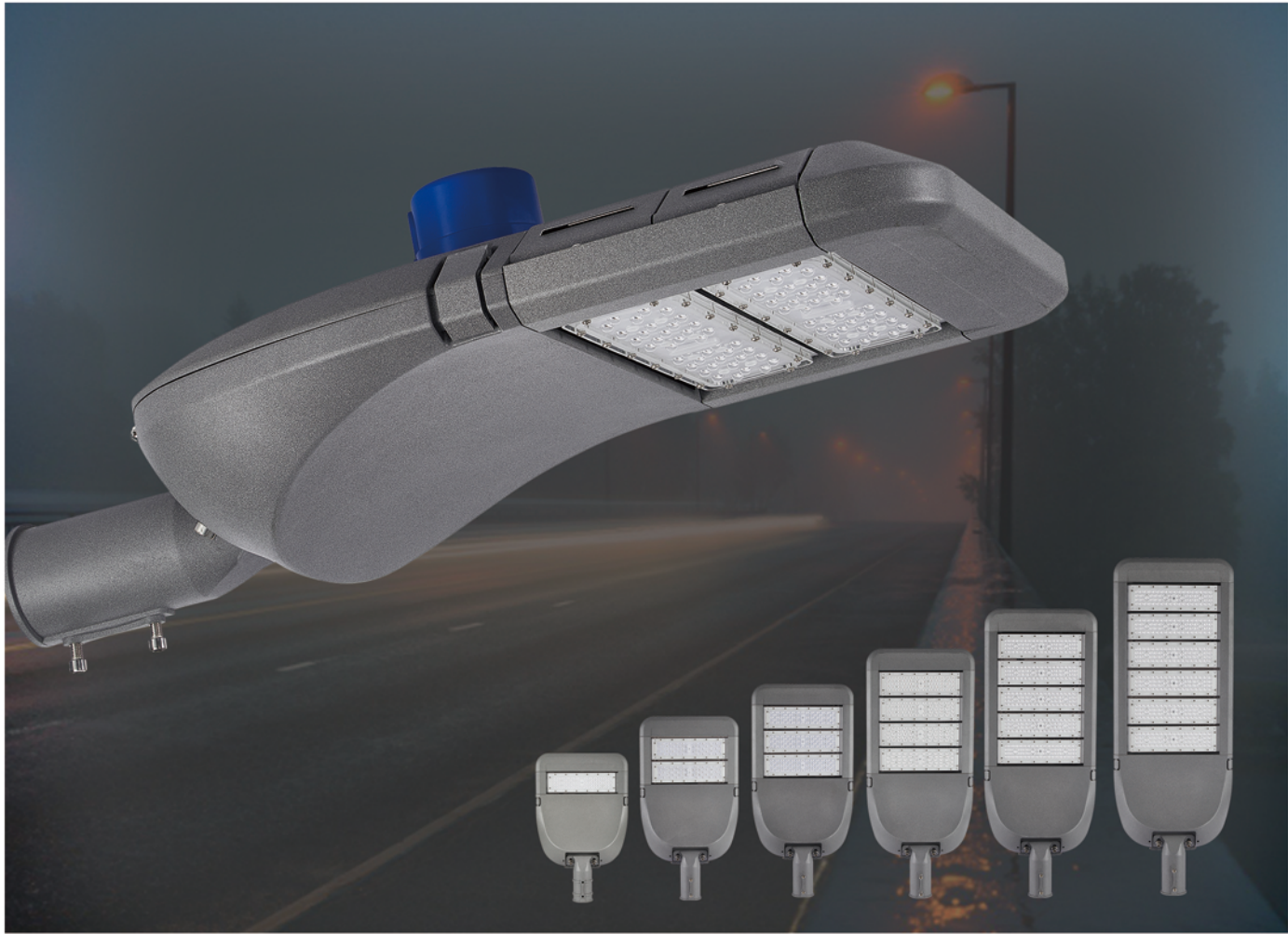
Item No.	Power	Luminous Efficiency	Product Size(mm)	Weight(kg)
BD01	60W	120LM/W	410*120*50	0.67kg
BD01	100W	120LM/W	440*140*50	0.78kg
BD01	120W	120LM/W	600*160*60	1.2kg
BD01	150W	120LM/W	620*180*60	1.3kg



Technical parameter

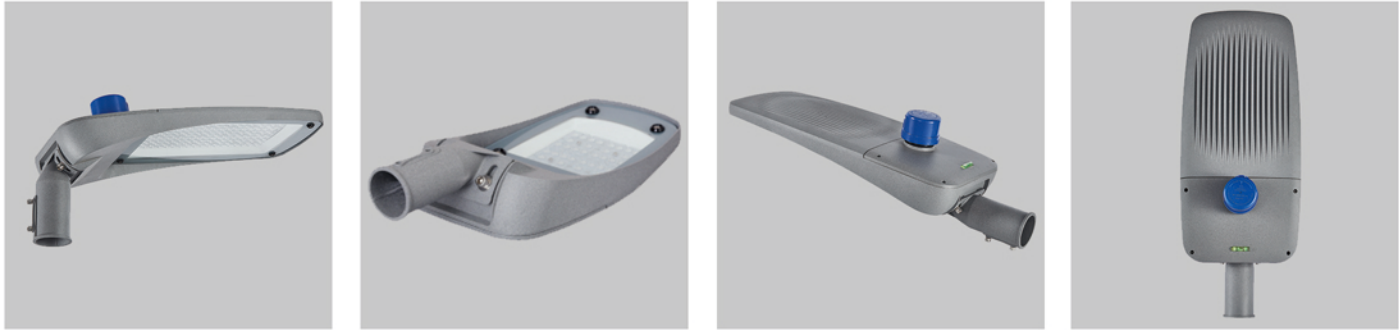
Item No.	Power	Luminous Efficiency	Product Size(mm)	Voltage
FJ01	30W/40W/50W/60W	120LM/W	680*300*180	AC 220V
FJ01	80W/100W/120W/150W	120LM/W	810*320*190	AC 220V
FJ01	150W/180W/200W	120LM/W	930*320*190	AC 220V





Technical parameter

Item No.	Power	Luminous Efficiency	Product Size(mm)	Weight(kg)
ART02	100W	120LM/W	650*350*135	4.7kg
ART02	150W	120LM/W	730*350*135	5.5kg
ART02	200W	120LM/W	810*350*135	6.4kg
ART02	250W	120LM/W	890*350*135	7.2kg
ART02	300W	120LM/W	970*350*135	8kg



Technical parameter

Item No.	Power	Luminous Efficiency	Product Size(mm)	Weight(kg)
YS01	40W	120LM/W	410*100*75	1.6kg
YS01	60W	120LM/W	460*175*90	1.8kg
YS01	100W	120LM/W	550*235*120	2.7kg
YS01	150W	120LM/W	675*275*120	4.5kg
YS01	200W	120LM/W	720*275*120	5.3kg





Technical parameter

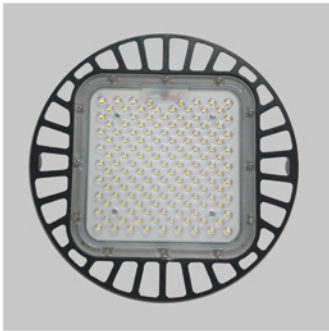
Item No.	Power	Luminous Efficiency	Product Size(mm)	Weight(kg)
CET01	50W/60W	120LM/W	405*166*79	0.77kg
CET01	100W	120LM/W	484*211*83	1.2kg
CET01	120W	120LM/W	484*211*83	1.2kg
CET01	150W/180W	120LM/W	580*242*83	1.6kg



Technical parameter

Item No.	Power	Luminous Efficiency	Product Size(mm)	Weight(kg)
UFO01	100W	140LM/W	290*140	1.65kg
UFO01	150W	140LM/W	330*140	2.12kg
UFO01	200W	140LM/W	365*140	2.38kg





Technical parameter

Item No.	Power	Luminous Efficiency	Product Size(mm)	Weight(kg)
UFO02	100W	120LM/W	275*110	1.21kg
UFO02	150W	120LM/W	320*110	1.67kg
UFO02	200W	120LM/W	350*110	2.32kg

IP65

CRI 70

30V/85-265V

PF > 0.95

CCT
3000K-6500K

50000H



Technical parameter

Item No.	Power	Luminous Efficiency	Product Size(mm)	Voltage
TGD01	50W	120LM/W	240*520*180	220V
TGD01	100W	120LM/W	280*380*180	220V
TGD01	150W	120LM/W	420*330*180	220V
TGD01	200W	120LM/W	420*330*180	220V
TGD01	250W	120LM/W	420*330*180	220V
TGD01	300W	120LM/W	450*330*180	220V
TGD01	400W	120LM/W	560*330*180	220V
TGD01	500W	120LM/W	670*330*180	220V
TGD01	600W	120LM/W	820*330*180	220V

IP65

CRI 70

30V/85-265V

PF > 0.95

CCT
3000K-6500K

50000H



Technical parameter

Item No.	Power	Luminous Efficiency	Product Size(mm)	Voltage
TGD02	100W	120LM/W	285*355*100	220V
TGD02	150W	120LM/W	320*425*100	220V
TGD02	200W	120LM/W	320*425*100	220V
TGD02	300W	120LM/W	395*435*100	220V
TGD02	400W	120LM/W	460*450*100	220V
TGD02	500W	120LM/W	530*450*100	220V
TGD02	600W	120LM/W	680*450*100	220V

IP65

CRI 70

30V/85-265V

PF > 0.95

CCT 3000K-6500K

50000H



Technical parameter

Item No.	Power	Luminous Efficiency	Product Size(mm)	Weight(kg)
TGD03	50W	120LM/W	215*185*38	0.8kg
TGD03	100W	120LM/W	310*203*38	1.1kg
TGD03	200W	120LM/W	312*282*47	1.8kg
TGD03	300W	120LM/W	410*282*47	2.49kg
TGD03	400W	120LM/W	514*275*50	3.87kg
TGD03	500W	120LM/W	612*280*50	4.65kg
TGD03	600W	120LM/W	736*276*50	5.26kg

IP65

CRI 70

30V/85-265V

PF > 0.95

CCT 3000K-6500K

50000H



Technical parameter

Item No.	Power	Luminous Efficiency	Product Size(mm)	Weight(kg)
TGD04	100W	130LM/W	335*235*150	2.6kg
TGD04	150W	130LM/W	425*320*160	4.5kg
TGD04	200W	130LM/W	425*320*160	4.5kg
TGD04	250W	130LM/W	525*325*170	6.4kg
TGD04	300W	130LM/W	610*320*170	7.5kg
TGD04	400W	130LM/W	670*320*170	9.0kg
TGD04	500W	130LM/W	810*320*170	14kg
TGD04	600W	130LM/W	970*320*200	16.5kg
TGD04	1000W	130LM/W	970*320*200	16.5kg

IP65

CRI 70

30V/
85-265V

PF > 0.95

CCT
3000K-6500K

50000H



Technical parameter

Item No.	Power	Luminous Efficiency	Product Size(mm)	Weight(kg)
TGD04	30W	140LM/W	167*157*31	0.51kg
TGD04	50W	140LM/W	197*188*39	1.0kg
TGD04	100W	140LM/W	256*248*44	1.41kg
TGD04	150W	140LM/W	298*288*48	1.937kg
TGD02	200W	140LM/W	327*316*48	2.4kg
TGD02	300W	140LM/W	405*335*56	2.9kg
TGD02	400W	140LM/W	428*365*56	3.645kg
TGD02	500W	140LM/W	467*398*56	4.5kg
TGD02	600W	140LM/W	495*427*56	5.05kg

IP65

CRI 70

30V/
85-265V

PF > 0.95

CCT
3000K-6500K

50000H